

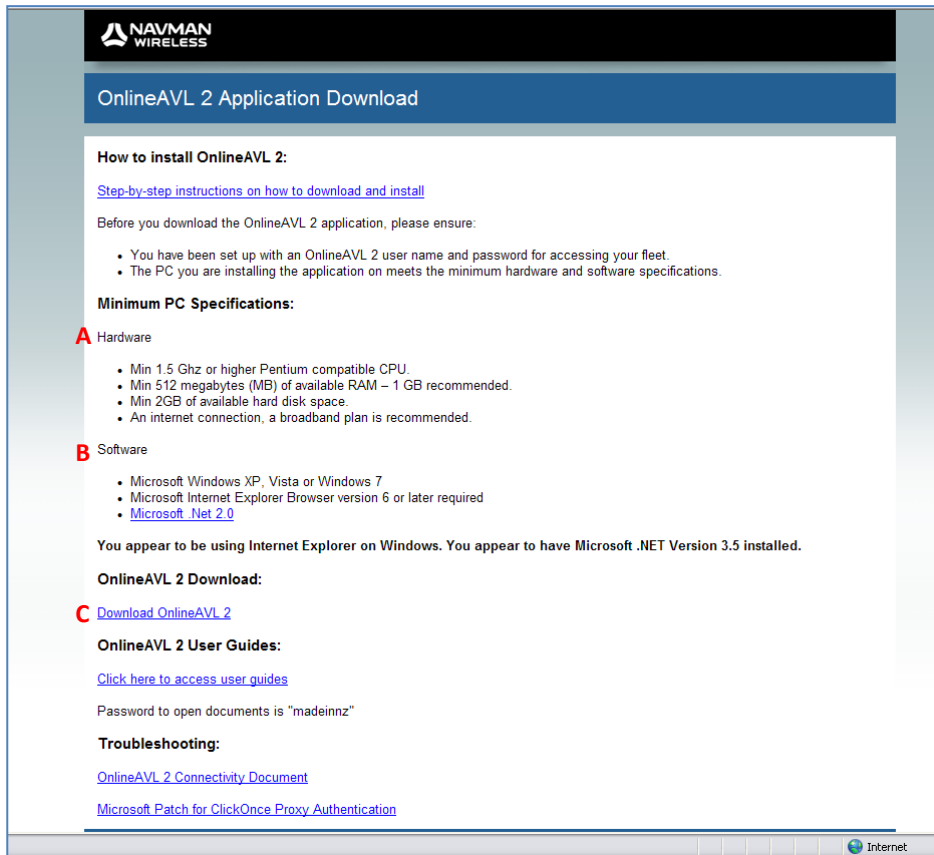
## Instructions for Installing OnlineAVL2

Please follow EACH STEP for a successful installation of the Navman Wireless OnlineAVL2 application on your PC/laptop.

**Step 1:** Go to <http://onlineavl2.navmanwireless.co.nz/>

DO NOT search for this website on Google, it won't work and DO NOT type www

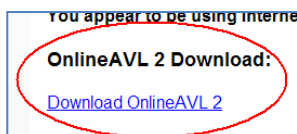
**Step 2:** The 'Navman Wireless OnlineAVL2 Application Download' website will open



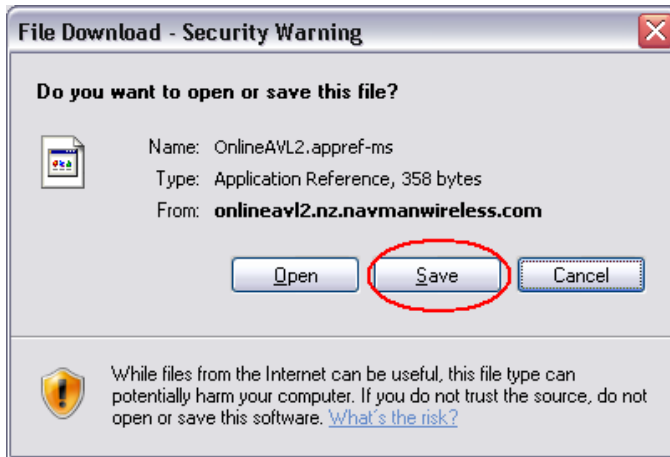
**Step 3:** Check your PC/laptop meets the minimum **hardware specification** – refer to **A** on diagram above

**Step 4:** Check your PC/laptop meets the minimum **software specification** – refer to **B** on the diagram above

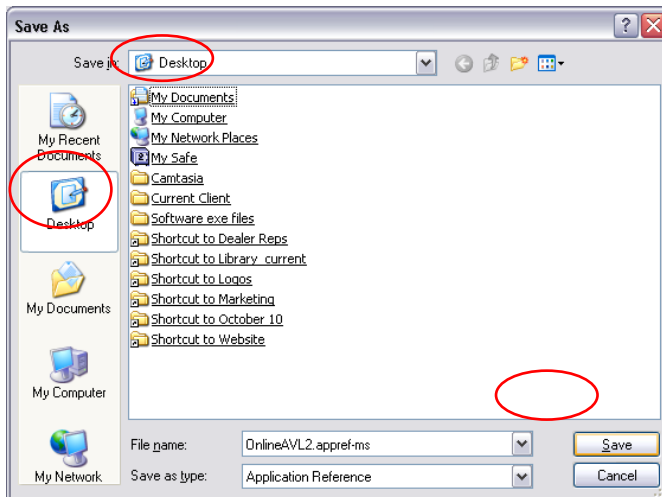
**Step 5:** Click on the text link **Download OnlineAVL2** – refer to **C** on the diagram above



**Step 6:** Click on **Save** in the *File Download – Security Warning* window

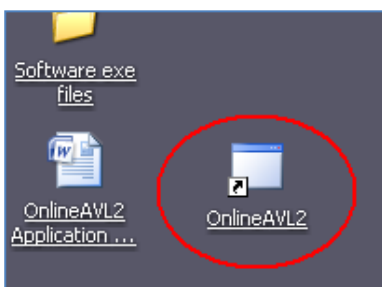


**Step 7:** Select **Desktop** as the location to save the file to  
Click **Save**



**Step 8:** Click **Close** in the *Download Complete* window

**Step 9:** Go to your Desktop and Click on the **OnlineAVL2 icon** (the file you just saved in step 7)



**Step 10: You will either be presented with an ‘Install’ or ‘You do not appear to have .NET installed’ screen**

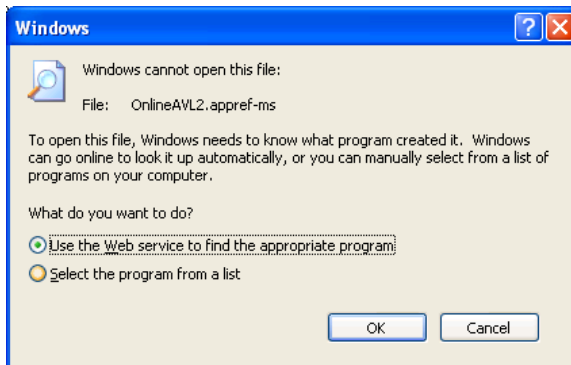
Install Screen

Click **Install** in the *Application Install – Security Warning* window and proceed to Step 11

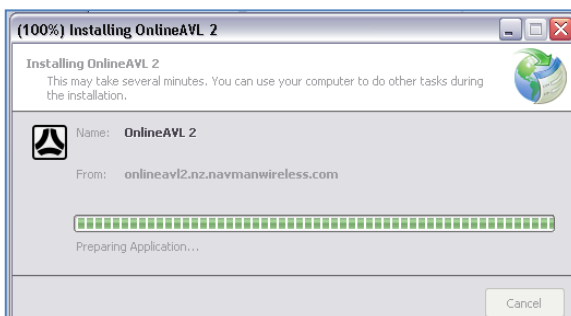


You do not appear to have .NET installed

Proceed to [‘How to install Microsoft .NET’ section](#) in this document

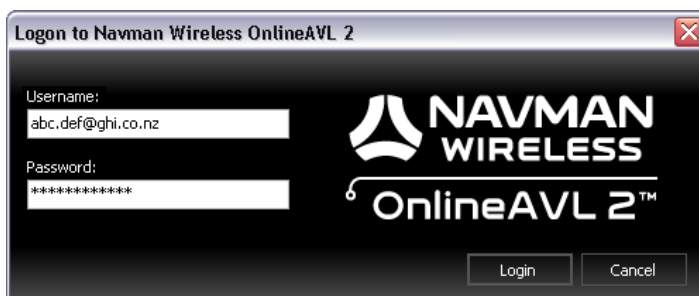


**Step 11: OnlineAVL2 will begin installing**



**Step 12: The Logon to Navman Wireless OnlineAVL 2 window will open**

**Type in your username and password (case sensitive)**



**Step 13:** To help you get started, refer to [OnlineAVL2 Quick Start Guide](#) (password **madeinnz**) OR the [OnlineAVL2 Training Portal](#) for an overview of OnlineAVL2.

## Training Portal

The [OnlineAVL2 Training Portal](#) contains:

- overview of Features and Reports in OnlineAVL2 and why you would use it
- video demonstrating how to set up and employ the functionality
- step-by-step text instructions to support the video demonstration

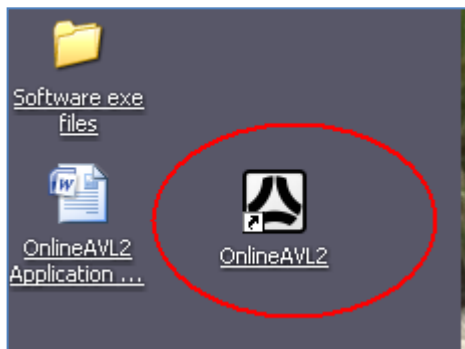
### How to access the AVL2 Training Portal

1. Go to [www.navmanwireless.co.nz/training-portal](http://www.navmanwireless.co.nz/training-portal)
2. You will have to first register to get your personal username and password (AVL2 application login will not work)
3. Once registration is complete, you will have instant access to the portal and will receive an email with your username and password which you should file for future reference

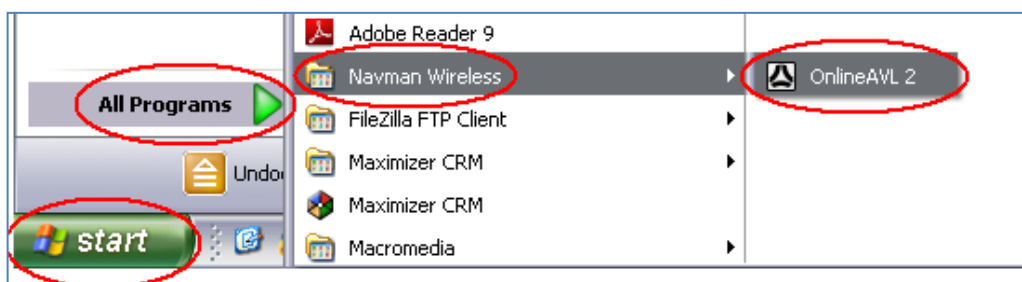
---

### Accessing the OnlineAVL2 application: 2 options

- Via the icon on your Desktop

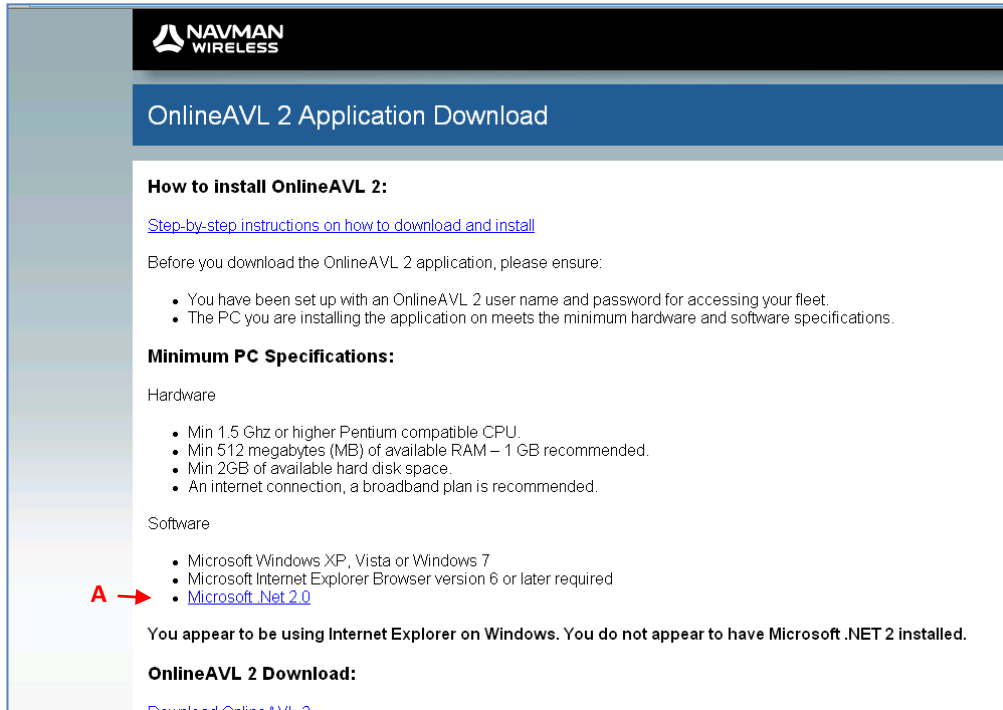


- Via Start > All Programs > Navman Wireless > OnlineAVL 2

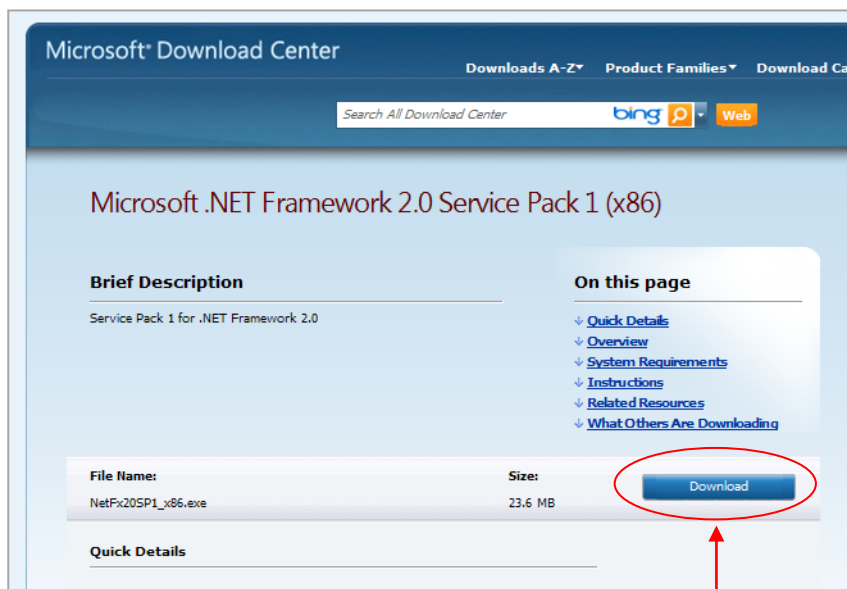


## How to install Microsoft .NET

1. Go to <http://onlineavl2.navmanwireless.co.nz/>
2. The 'Navman Wireless OnlineAVL2 Application Download' website will open

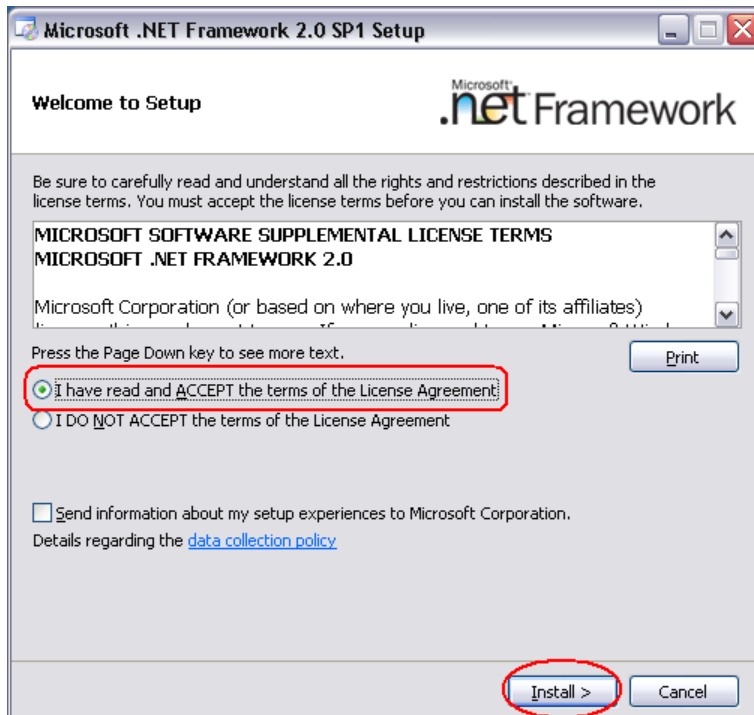


3. Click on the text link **Microsoft .Net 2.0** – refer to **A** on the diagram above
4. The 'Microsoft Download Centre' website will open



5. Click on **Download**
6. Click **Run** in the *File Download – Security Warning* window
7. Click **Run** in the *Internet Explorer – Security Warning* window

8. The *Microsoft .NET Framework 2.0 SP1 Setup* window will open



9. Check the radio button  **I have read and ACCEPT the terms of the License Agreement**
10. Click **Install >**
11. Microsoft .NET will begin installing
12. Go to **Step 9** on **Page 2** to complete installation of OnlineAVL2